

About The NU PS-OC

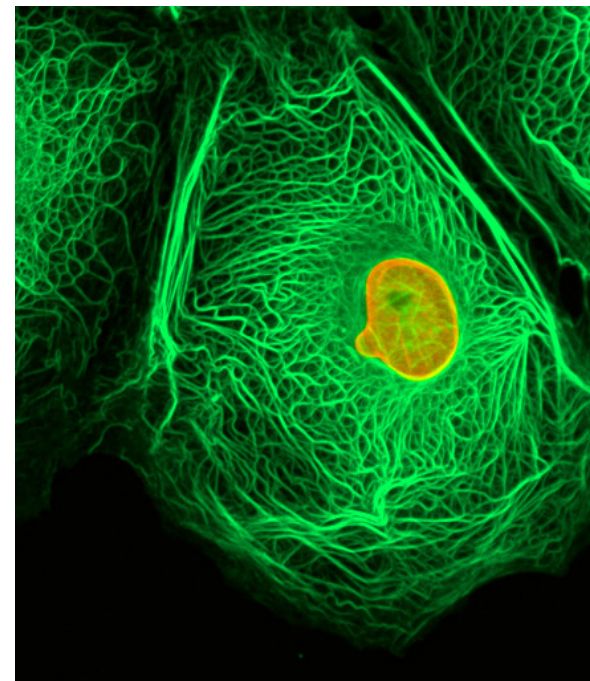
Funded by a 5-year, multi-million dollar grant from the National Cancer Institute, the NU PS-OC employs non-traditional, physical sciences-based approaches to better understand the molecular changes leading to cancer. The center is currently pursuing five projects that will generate key discoveries about the way genetic information in both normal and cancer cells is encoded, read, and translated. To find out more about this work, visit our website: <http://www.psoc.northwestern.edu>. The site will launch on January 5, 2010.



The Campus Environment

Located on the shores of Lake Michigan in Evanston, Illinois, the Northwestern campus offers an exciting intellectual atmosphere within an attractive natural setting. Outdoor recreational opportunities abound, and many of Chicago's most interesting attractions stand just a short train ride away. Learn more at the NU website: <http://www.northwestern.edu>.

Summer Research Experiences for Undergraduates

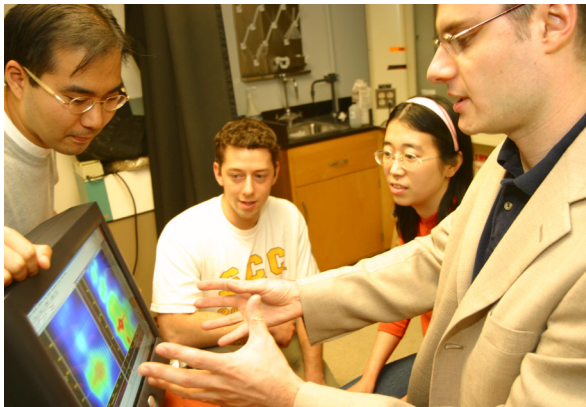


**Physical Sciences
Oncology Center**

Northwestern University

Program Overview

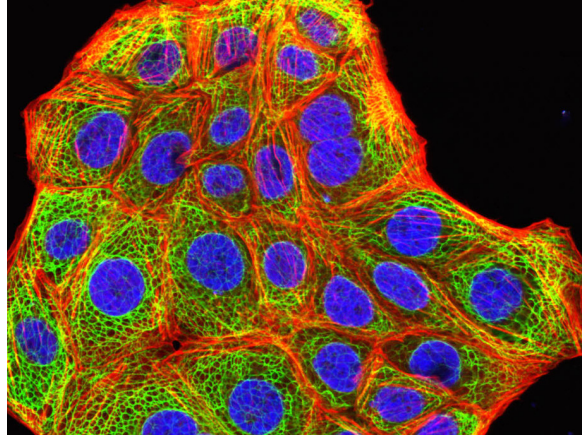
The Physical Sciences-Oncology Center at Northwestern University (NU PS-OC) invites applications to its eight-week summer program for underserved college students with interests in both the physical and biomedical sciences. This program will allow students concentrating in engineering, mathematics, or the physical sciences to participate in research that applies physical sciences concepts and methodologies to problems in tumor biology. In addition to acquiring hands-on laboratory experience, participants will also attend weekly lunchtime seminars and a two-day workshop to gain a basic understanding of tumor biology and cancer detection, diagnosis, and treatment. The intent of this program is to encourage the next generation of physical scientists, mathematicians, and engineers—especially those who are members of historically underrepresented populations—to consider focusing their careers on cancer research.



Stipend

Support for program participants includes:

- A \$3500 Stipend.
- Free On-Campus Housing.
- Reimbursement for Travel Expenses.



Eligibility

To be considered for this program, applicants must:

- Currently be college freshmen, sophomores, or juniors pursuing a major in engineering, applied mathematics, or a physical science.
- Have completed at least one college course in biology by the program's start date.
- Be members of an underserved population. In the physical and biomedical sciences, these groups include African-Americans, Hispanics, American Indians, individuals with disabilities, and first-generation college students.

Applying

To apply, students should submit the following materials:

- a completed application form
- two letters of recommendation
- college transcripts
- a personal statement.

Application forms will be available from the PS-OC website, <http://www.psoc.northwestern.edu>, on January 5th, 2010. Applications are due by March 2, 2010.

Program Dates

The 2010 PS-OC summer research experience begins on June 21st and concludes on August 13th.

Additional Information

Benette Phillips, PhD
Co-Director of Education and Training
Physical Sciences-Oncology Center
Northwestern University
schallma@casbah.it.northwestern.edu

